



CNC Vertical Lathe Machine AMT-20M ATC + Cs Axis, Made In Taiwan

1~200rpm (w/2 steps)

Riser block 400mm

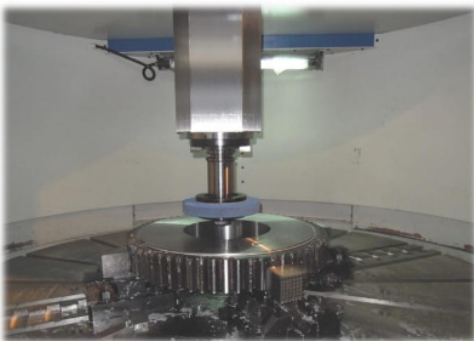
STANDARD ACCESSORIES

- (1.) Table Diameter: 2000mm
- (2.) Max. Swing: 2500mm
- (3.) Max. Turning Diameter: 2400mm
- (4.) Max. Turning Height: 1600mm (2000MM with Riser Block)
- (5.) Max. Mass of Workpiece: 13000kg
- (6.) Horizontal Travel (X-Axis): -100~+1380mm
- (7.) Vertical Travel (Z-Axis): 1000mm
- (8.) Cross rail Stroke: 800mm (with 5 step)
- (9.) Rapid Traverse (X-Axis/Z-Axis) : 10 m/min , 8 m/min
- (10.) Fanuc System 0i-TF CNC Controller with 10.4" color TFT LCD
- (11.) Table Speed: 1~200 rpm (with 2 step)
- (12.) Spindle Motor: AC 45/55 kw
- (13.) Live Spindle Motor: AC 11/15 kw
- (14.) ATC Tools x 18 sets
- (15.) Chip Conveyor & Coolant Tank
- (16.) Oil/Water Separator
- (17.) High Pressure Pump (3 Bar)
- (18.) Table Lubricant Oil Cooling Unit
- (19.) Machine Cover (Semi-Opened)
- (20.) Auto Lubrication System
- (21.) Heat Exchanger for Electrical Cabinet
- (22.) Table Manual 4-Jaw Chuck
- (23.) Hydraulic Unit
- (24.) Work Light and Signal Tower Light
- (25.) Tool Holder BT-50 (O.D.+I.D.) x 1 pcs
- (26.) Anchor Bolt & Tools and Tool Box
- (27.) Operation Manual & Spare Part List
- (28.) Metal frame and case in machine shipment packing

These following optional accessories to be added with machine with extra cost.
Optional Accessories:

- (1.) Air Conditioner for Electrical Cabinet
- (2.) 6 Bar High Pressure Coolant Pump
- (3.) 10 Bar High Pressure Coolant Pump
- (4.) 20 Bar High Pressure Coolant Pump
- (5.) Coolant Through Spindle
- (6.) Filter With Coolant Tank
- (7.) Heidenhain Scale Precision 0.005 (X Axis)
- (8.) Heidenhain Scale Precision 0.005 (Z Axis)
- (9.) CE Normative
- (10.) Transformer for power source 220V,380V,440V
- (11.) Renishaw Tool Probe
- (12.) Renishaw Parts Probe
- (13.) (ODF) OD Tool Holder (1pc)
- (14.) (IDF) ID Tool Holder (1pc)
- (15.) (BOB) Boring Holder (1pc)
- (16.) (ISF) Socket Holder (1pc)
- (17.) (DRI) Taper Holder (1pc) for no live spindle use only

OPTIONAL - GRINDING HEAD



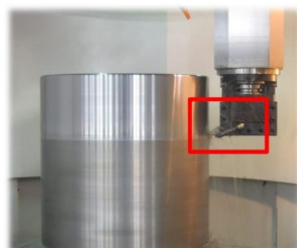
OPTIONAL - 90 DEGREE ANGLE HEAD



OPTIONAL - CTS

CTS :

Coolant from Z-axis center, through tool holder and spray. It can cool tool down and remove chips.



Coolant bar :

- 1) 6 Bar
- 2) 10 Bar
- 3) 20 Bar